



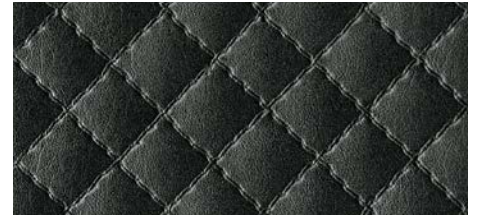
□  
LL ROMBO 12 Creme



**LL ROMBO 12 Bianco matt**  
2600 x 1000 / NA 16418 / SA 16419



**LL ROMBO 12 Creme**  
2600 x 1000 / NA 15653 / SA 15657

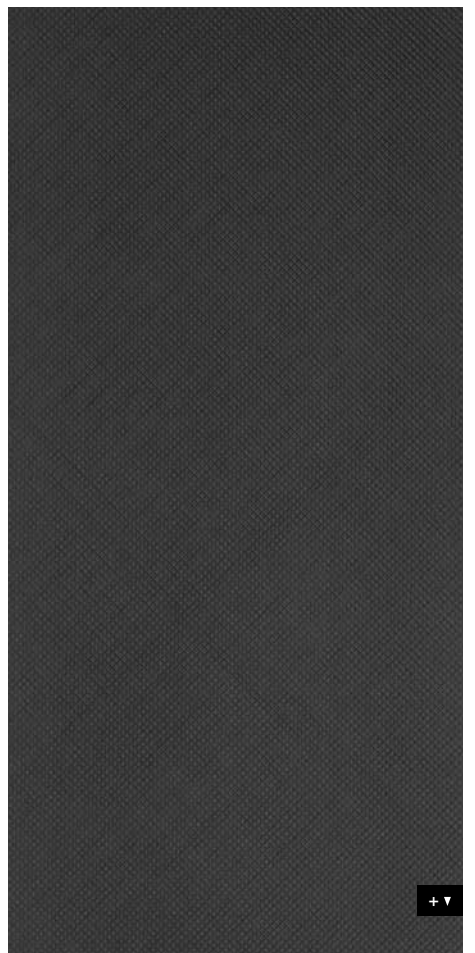


**LL ROMBO 12 Nero matt**  
2600 x 1000 / NA 15654 / SA 15658

## LEATHER-LINE

# LL ROMBO 12

2600 x 1000



### Product characteristics

|                       | NA            | SA   |
|-----------------------|---------------|------|
| Base material         | HIPS, PE-foam |      |
| Surface material      | PU-leather    |      |
| Material thickness mm | 2,8           | 3,04 |
| Max. relief height mm | 4,0           | 4,24 |
| Temperature stability | up to 60 °C   |      |
| Wet room suitability  | ■■■■          |      |
| Rolled packable *     | ✓             | ✓    |

\* Design sheets to be rolled with the decor side outwardly (both - NA and SA version). We recommend rolling not more than 3 sheets per carton (480 x 480 mm).

### Extra equipment

|                     | NA | SA |
|---------------------|----|----|
| Special formats     | —  | —  |
| Further thicknesses | —  | —  |
| Cuttings            | ✓  | ✓  |
| Magnetic            | —  |    |
| PVA pre-treatment   | —  | —  |

### Processing

|                         | NA     | SA     |
|-------------------------|--------|--------|
| Cutting, punching       | ✓      | ✓      |
| Drilling                | ✓      | ✓      |
| Laser cutting           | ✓      | ✓      |
| Hot bending             | —      | —      |
| PVA compressible        | —      | —      |
| Smallest bending radius | 300 mm | 300 mm |

### Accessories

|         |            |
|---------|------------|
| SIBUKLE | Spatula A2 |
|---------|------------|

### Special colors

|            |
|------------|
| On request |
|------------|